

# WIRELESS GO II™

SINGLE SET WIRELESS MICROPHONE SYSTEM



**SINGLE SET**  
1 x Receiver & 1 x Transmitter



**3.5mm, USB-C, iOS®**  
AUDIO OUTPUT\*



**BUILT-IN**  
MICROPHONE

The Wireless GO II Single is an extremely versatile and ultra-compact wireless microphone system consisting of a dual receiver and single transmitter. Featuring a high-quality microphone built into the transmitter for completely wireless operation, flexible output for connecting to cameras, computers and smartphones, extended transmission range, over 40 hours of on-board recording and much more, Wireless GO II Single is the perfect microphone for a wide range of content creation applications.



- Ultra-compact wireless microphone system
- Series IV 2.4GHz digital transmission with 128-bit encryption delivers 200m range (line of sight)
- 3.5mm TRS analog output, USB-C and iOS compatible digital audio output
- In-built rechargeable lithium-ion battery – up to 7 hours battery life
- On-board recording – over 40 hours of internal memory
- Advanced features accessible via RØDE Central including safety channel, flexible gain control (three-stage pad, expandable to 10-stage) and more

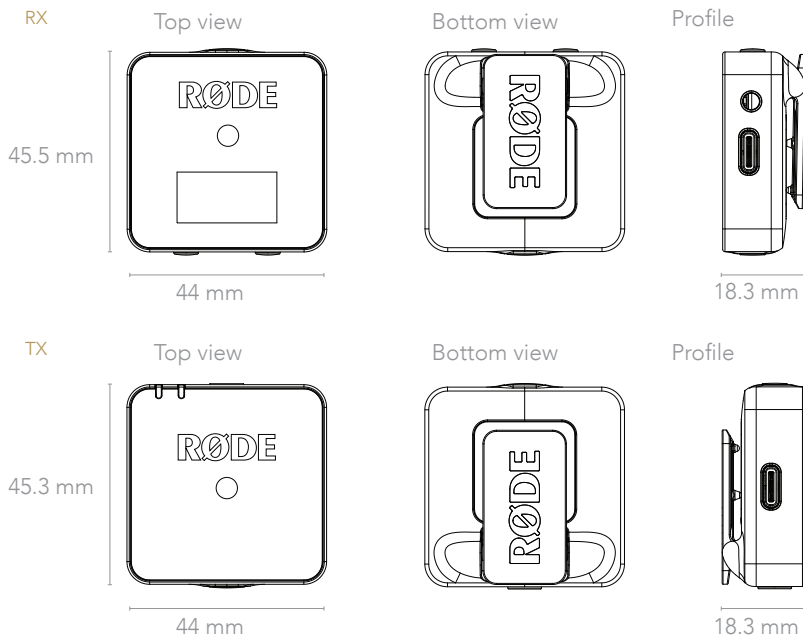


## ACOUSTIC & ELECTRICAL SPECIFICATIONS

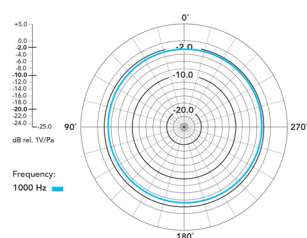
Acoustic Principle:	Pre-polarised pressure transducer
Polar Pattern:	Omnidirectional
Frequency Range:	50Hz – 20kHz
Maximum SPL (Mic):	100 dB SPL (1kHz @ 1m) dBU
Maximum Input Level (3.5mm):	-20dBV
Microphone Preamp Gain:	20dB
Equivalent Noise Level (A-Weighted):	22dBA
Power Requirements:	In-built rechargeable lithium-ion battery charged via USB 5V, 0.3A
Operating Time:	Up to 7 hours
Analog Inputs:	3.5mm TRS (lavalier microphone input)
Analog Outputs:	3.5mm TRS
Transmission Range:	200m (line of sight)
Computer Connectivity:	USB Type-C
Operating System Requirements:	macOS 10.11 above Windows 10 and above

## MECHANICAL SPECIFICATIONS

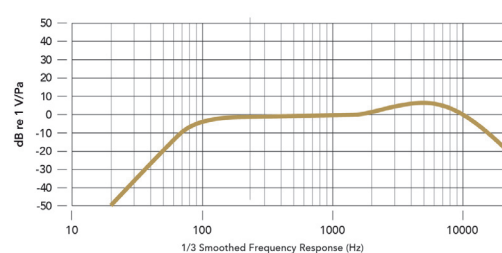
Weight (grams):	TX: 30g RX: 32g
Dimensions (millimetres):	TX                      RX Length: 44            Length: 44 Width: 45.3           Width: 45.5 Height: 18.3           Height: 18.3
Included Accessories:	2 x Fur Windshields 2 x USB-C Cables 1 x SC5 3.5mm TRS Cable 1 x Carry Pouch



## POLAR PATTERN



## FREQUENCY RESPONSE

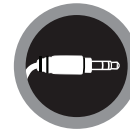


# LAVALIER GO™

PROFESSIONAL WEARABLE MICROPHONE



**BROADCAST  
QUALITY**



**TRS  
CONNECTION**

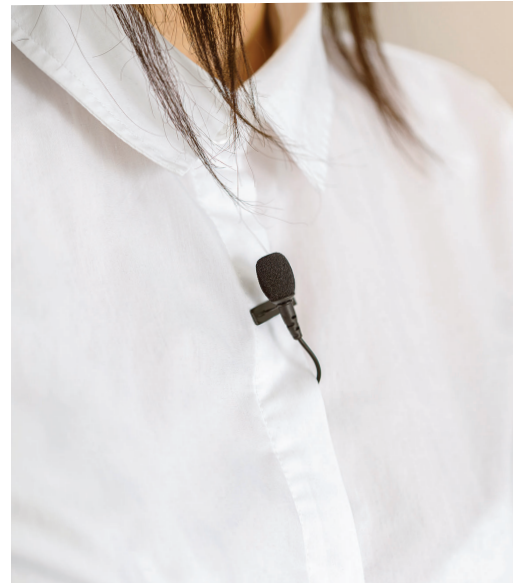


**WIRELESS GO  
COMPATIBLE**



Lavalier GO is a professional-grade wearable microphone designed for use in a wide range of applications. The 3.5mm TRS connector is designed to pair perfectly with the RØDE Wireless GO™ and most recording devices with a 3.5mm TRS microphone input.

- Professional-grade lavalier mic with 3.5mm TRS jack
- High-quality omnidirectional condenser capsule
- Discreet 4.5mm miniature microphone
- Kevlar® reinforced cable
- Includes pop shield and durable mounting clip



## ACOUSTICS & ELECTRICAL SPECIFICATIONS

Acoustic Principle:	Permanently Polarised Condenser
Polar Pattern	Omni-directional
Frequency Range	20Hz - 20kHz
Output Impedance	3k Ω Typical
Signal To Noise Ratio	67 dB
Equivalent Noise	27 dB Typical
Maximum SPL	110 dB
Sensitivity	-35dB (17.8mV @94dB SPL)
Dynamic Range	83dB Typical
Power Requirements	Powered from plug-in power TRS socket (2.7V)
Output Connection	Gold-plated TRS plug

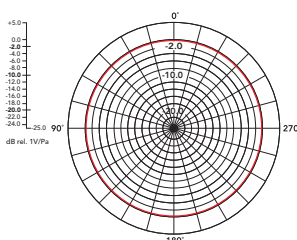
MIC



TRS



## POLAR PATTERN

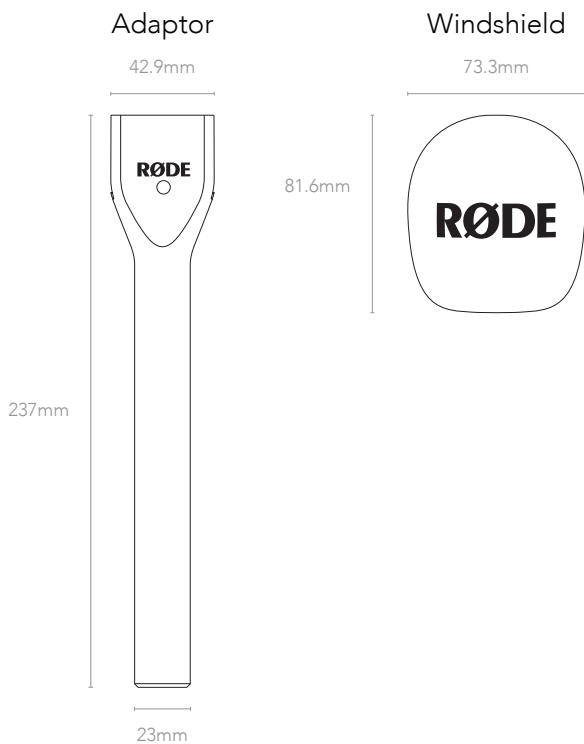


# INTERVIEW GO™

HANDHELD ADAPTOR FOR WIRELESS GO



The Interview GO is an adaptor that converts the Wireless GO transmitter into a compact handheld interview microphone. Includes a foam windshield to reduce wind noise and plosives.



## SPECIFICATIONS

Dimensions (mm):	
Adaptor	Diameter: 23 Width: 42.9 Height: 237
Windshield	Depth: 73.3 Width: 73.3 Height: 81.6
Weight (grams):	
Adaptor	84
Windshield	8
Compatible Microphones:	Wireless GO